

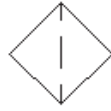
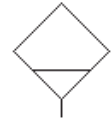
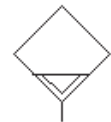
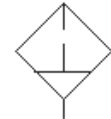
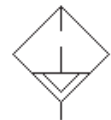
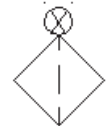
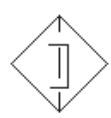
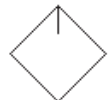
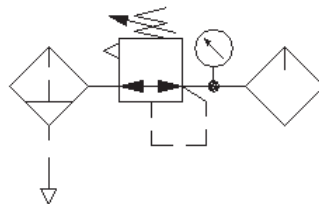
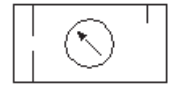
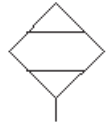
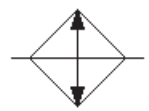
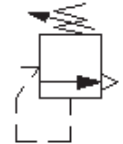
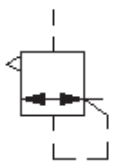
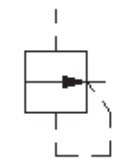
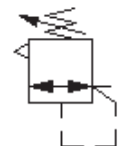
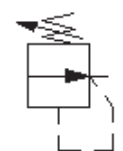
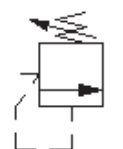


Norgren Graphic Symbol Library

A collection of pneumatic graphic symbols per
ISO 1219-1 in .dwg and .dxf formats.



Air Line Equipment

FrI001 – Filter

FrI002 – Filter with manual drain

FrI003 – Filter with automatic drain

FrI004 – Filter with separator, manual drain

FrI005 – Filter with separator, automatic drain

FrI006 – Filter with contamination indicator

FrI007 – Filter with additional magnetic element

FrI008 – Lubricator

FrI009 – Conditioning unit

FrI010 – Conditioning unit, simplified

FrI011 – Air dryer

FrI012 – Cooler

FrI013 – Relief valve, 1

FrI014 – Pilot operated regulator, relieving

FrI015 – Pilot operated regulator, non-relieving

FrI016 – Regulator, relieving

FrI017 – Regulator, non-relieving

FrI018 – Relief valve, 2


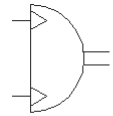


Cylinders

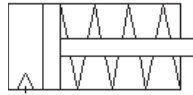
Cyl001 – Single acting cylinder, air extend



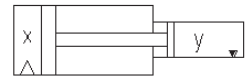
Cyl011 – Pneumatic semi-rotary actuator



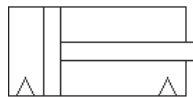
Cyl002 – Single acting cylinder, spring retract



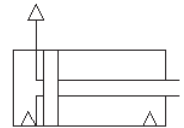
Cyl012 – Air-to-oil intensifier



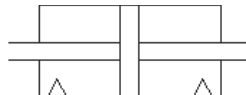
Cyl003 – Double acting cylinder, non-cushioned



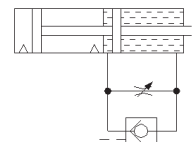
Cyl013 – Double acting cylinder, vented



Cyl004 – Double acting cylinder, double rod



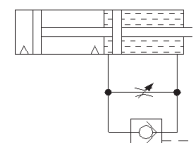
Cyl014 – Tandem air/oil cylinder, 1



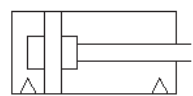
Cyl005 – Double acting cylinder, cushioned rear



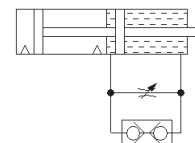
Cyl015 – Tandem air/oil cylinder, 2



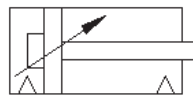
Cyl006 – Double acting cylinder, cushioned both ends



Cyl016 – Tandem air/oil cylinder, 3



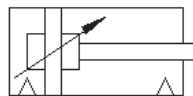
Cyl007 – Double acting cylinder, adjustable cushion rear



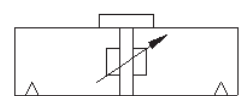
Cyl017 – Pneumatic/hydraulic actuator



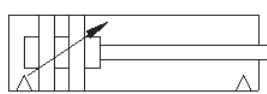
Cyl008 – Double acting cylinder, adjustable cushion both ends, 1



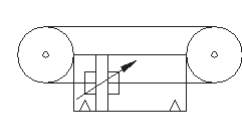
Cyl018 – Rodless cylinder



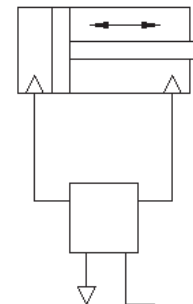
Cyl009 – Double acting cylinder, adjustable cushion both ends, 2



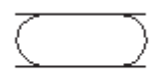
Cyl019 – Cable cylinder



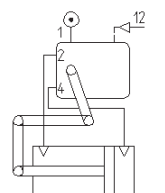
Cyl010 – Double acting cylinder, positioning



Cyl020 – Air spring actuator

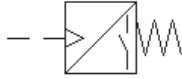


Cyl021 – Servo cylinder assembly

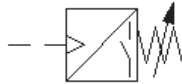


Electrical

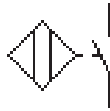
Elec01 – Pressure switch, non-adjustable



Elec02 – Pressure switch, adjustable



Elec03 – Proximity sensor



Elec04 – Reed switch



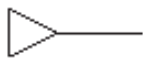
Elec05 – Proximity sensor



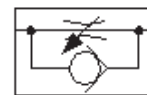


Miscellaneous

Misc001 – Pressure source



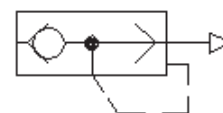
Misc011 – One-way restrictor valve



Misc002 – Silencer



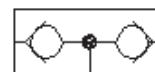
Misc012 – Quick-exhaust valve



Misc003 – Pressure gauge



Misc013 – Priority shuttle valve



Misc004 – Pressure indicator



Misc014 – Restrictor



Misc005 – Air receiver, 1



Misc015 – Adjustable restrictor valve



Misc006 – Air receiver, 2



Misc016 – Mechanically operated non-return valve, 1



Misc007 – Air receiver, 3



Misc017 – Mechanically operated non-return valve, 2



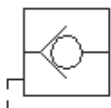
Misc008 – Gate valve



Misc018 – Non-return valve, spring loaded



Misc009 – Non-return valve, pilot controlled

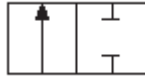


Misc010 – Shuttle valve

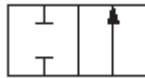


Valves

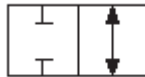
Valv01 – Two-way, two-position, 1



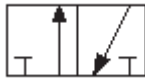
Valv02 – Two-way, two-position, 2



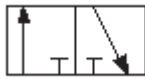
Valv03 – Two-way, two-position, 3



Valv04 – Three-way, two-position, 1



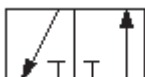
Valv05 – Three-way, two-position, 2



Valv06 – Three-way, two-position, 3



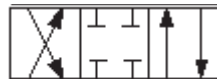
Valv07 – Three-way, two-position, 4



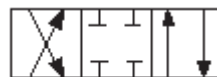
Valv08 – Four-way, two-position



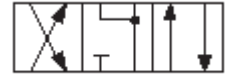
Valv09 – Four-way, three-position, center position, blocked, throttling



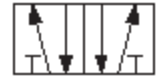
Valv10 – Four-way, three-position, center position, blocked



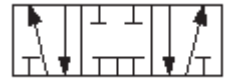
Valv11 – Four-way, three-position, center position, pressure to cylinder ports



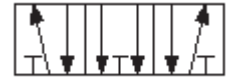
Valv12 – Five-way, two-position



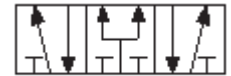
Valv13 – Five-way, three-position, center position, blocked



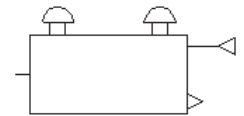
Valv14 – Five-way, three-position, center position, cylinder ports to exhaust



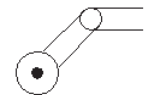
Valv15 – Five-way, three-position, center position, pressure to cylinder ports



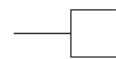
Valv16 – Two hand anti tie down



Valv17 – Unidirectional roller



Valv18 – Pressure actuator



Valv19 – Solenoid, 1



Valv20 – Solenoid, 2





Valves

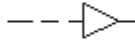
Valv21 – Solenoid, 3



Valv31 – Spring



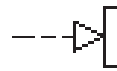
Valv22 – Air pilot, 1



Valv32 – Roller



Valv23 – Air pilot, 2



Valv33 – Push button



Valv24 – Air pilot, 3



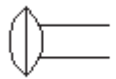
Valv34 – Pull button



Valv25 – Air pilot, 4



Valv35 – Push/pull button



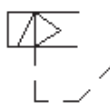
Valv26 – Integral air



Valv36 – Mechanical operator, 1



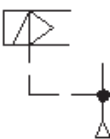
Valv27 – Solenoid, 4



Valv37 – Plunger



Valv28 – Solenoid, 5



Valv38 – Plunger with adjustable length



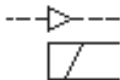
Valv29 – Solenoid, 6



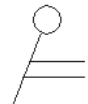
Valv39 – Pedal



Valv30 – Solenoid, 7



Valv40 – Lever





Valves

Valv41 – Detent



Valv42 – Mechanical operator, 2

