

FISHER INDUSTRIAL REGULATORS

Regulator Solutions for Pressure Control In Process Plants,
General Manufacturing and Commercial Service



FISHER-ROSEMOUNT Managing The Process Better.

AIR

Instrument Supply Regulators
Switching / Lock-up / Trip Valves
Pneumatic Panel Loader
Filters, Reliefs, Volume Boosters



TYPE 167A



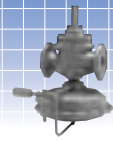
TYPE 67AFR



TYPE 1301F/1301G



TYPE 64 SERIES

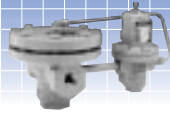


TYPE 1098-EGR

Durable / Simple Design / Low Maintenance / Stocked Locally

STEAM

Pressure Step Down / PRV
Steam Tracing
Special Applications
Remote Setpoint Control with Air Set
Deaerator Supply
Feedwater Heater Supply and Vent
Condensate Flash Tanks
Designed per ANSI



TYPE 92C



TYPE 92B



TYPE 92S



TYPE 95HT



TYPE 92P

Meets ASME Boiler & Pressure Vessel Codes / Low Maintenance / Stocked Locally

TANK BLANKETING / VAPOR RECOVERY

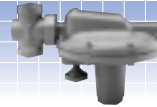
Complete Pad / Depad Systems
Vacuum Capabilities
Special Applications



TYPE Y693



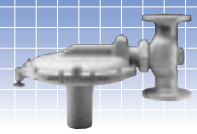
TYPE 1190



TYPE Y690



TYPE Y695



TYPE Y696VR

Conserves Blanketing Gas / Handles Corrosives / Low Maintenance / Stocked Locally

LIQUIDS

Lube and Fuel Oil
Condensate and Water
(De-ionized, Sea Water)
Back Pressure Control
Differential Control



TYPE 98 SERIES



TYPE 95H



TYPE 63EG 98HM



TYPE 1301



627W SERIES

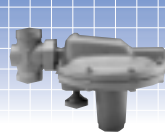
Tight Shutoff / Accurate / Handles Corrosives / Stocked Locally

PROCESS GASES

Cyrogenics, Oxygen
High Pressure and Temperature
Broad Application Coverage
Vacuum Applications



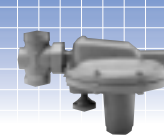
TYPE 95L SERIES



TYPE Y690



TYPE 98 SERIES



TYPE Y690 VB



TYPE 1098-EGR

Tight Shutoff / Accurate / Handles Corrosives / Stocked Locally

FUEL GAS

Fuel Gases
Burner Trains



TYPE 299



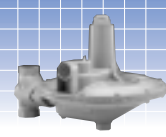
TYPE 133 SERIES



TYPE 1098-EGR



TYPE 99 SERIES

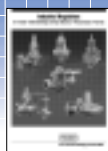


TYPE S201

Accurate / Consistent Control / Fast Response / Stocked Locally

LITERATURE

More Information From the
Fisher Regulator Division



INDUSTRIAL REGULATORS



NATURAL GAS REGULATORS



INTERACTIVE CD-ROM

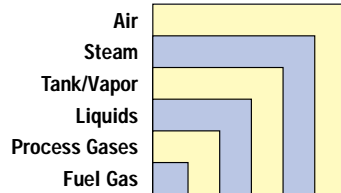


EDUCATIONAL SERVICES

For information, service, or support contact your nearest Fisher Representative at **1-800-558-5853**
Outside U.S. Call: (515) 754-3741 Fax: (515) 754-3081 www.fisher.com/regulators e-mail: fisher.regulators@frco.com

Fisher Industrial Regulator Selection Table

Typical Applications



Function

PRV = Pressure Reducing R = Relief/Backpressure S = Switching
 VB = Vacuum Breaker VR= Vacuum Regulator

Pressure Ranges*						Fisher Type or Series	Operation	End Connection Sizes	Maximum Inlet Pressure*	Further Reference		
										Page No.	Product Bulletin**	Function
3-150 / 0,2-10,3	■	■			■	64 Series	Direct	1/2"	250 / 17,2	5	71.1:64	PRV
3-100 / 0,2-6,9	■	■			■	67AFR	Direct	1/4"	250 / 17,2	4	71.1:67	PRV
2-30 / 0,14-2,1	■	■	■	■	■	95L Series	Direct	1/4", 1/2", 3/4", 1"	300 / 20,7	12	71.1:95	PRV
5-400 / 0,34-27,6	■	■	■	■	■	95H Series	Direct	6 sizes from 1/4" to 2"	600 / 41,4	10	71.1:95	PRV
10-500 / 0,69-34	■	■	■	■	■	1301F/G	Direct	1/4"	6,000 / 414	5	71.1:1301	PRV
3-80 / 0,2-5,5	■	■			■	670	Direct	1/4"	250 / 17	***	20:670	PRV
2"wc-300 / 5(m)-20,7	■	■	■		■	1098-EGR	Pilot	7 sizes from 1" to 12" x 6"	400 / 28	5	71.4:289	PRV
2-150 / 0,14-10,3	■	■			■	92B	Pilot	1", 1-1/2", 2", 3", 4"	250 / 17,2	6	71.2:92	PRV
5-250 / 0,34-17,2	■	■	■		■	92C	Pilot	1/2", 3/4", 1"	300 / 20,7	6	71.2:92C	PRV
2-150 / 0,14-10,3	■	■			■	92P	Air-Loaded	1", 1-1/2", 2", 3", 4"	250 / 17,2	7	71.2:92	PRV
2-250 / 0,14-17,2	■	■			■	92S	Pilot	7 sizes from 1" to 6" x 4"	300 / 21	7	71.2:92S	PRV
3-100 / 0,21-6,9	■	■	■		■	67SS	Direct	1/4"	400 / 27,6	***	71.1:67	PRV
20-80 / 1,4-5,5	■	■	■		■	75A	Direct	6 sizes from 1/2" to 2-1/2"	200 / 13,8	***	71.1:75A	PRV
2-250 / 0,14-17,2	■	■			■	92W	Pilot	7 sizes from 1" to 6" x 4"	300 / 20,7	***	71.2:92W	PRV
10-500 / 0,69-34	■	■	■		■	627W Series	Direct	3/4", 1", 2"	900 / 62	11	71.1:627W	PRV
4"wc-5 / 10(m)-0,34	■	■	■		■	66	Direct	2", 3", 4"	10 / 0,69	***	71.1:66	PRV
3-100 / 0,21-6,9	■	■	■		■	67 Series	Direct	1/4"	250 / 17,2	13	71.1:67	PRV
0-100 / 0-6,9	■	■	■		■	99 Series	Pilot	2"	1,000 / 69	15	71.2:99	PRV
1"wc-7 / 5(m)-0,48	■	■	■		■	Y690	Direct	3/4", 1"	150 / 10,3	***	71.1:Y690	PRV
1"wc-7 / 2,5(m)-0,5	■	■	■		■	Y692	Direct	1-1/2", 2"	150 / 10,3	***	74.1:Y692	PRV
2"wc-10 / 5(m)-0,69	■	■	■		■	133 Series	Direct	2"	60 / 4	14	71.1:133	PRV
1/4"wc-7 / 0,6(m)-0,48	■	■	■		■	1190	Pilot	1", 2", 3", 4", 6"	300 / 20,7	8	74.1:1190	PRV
1/2"wc-10 / 1,2(m)-0,69	■	■	■		■	Y693	Direct	1-1/2", 2"	150 / 10,3	8	74.1:Y693	PRV
5-700 / 0,34-48	■	■	■		■	399A-161EB	Pilot	16 sizes from 1" to 12" x 6"	1,050 / 72,4	15	71.2:399A-161	PRV
3-1/2"wc-35 / 9(m)-2,4	■	■	■		■	299	Pilot	1-1/2", 2"	150 / 10,3	14	71.2:299	PRV
5-500 / 0,34-34,5	■	■	■		■	627 Series	Direct	3/4", 1", 2"	2,000 / 138	***	71.1:627	PRV
2"wc-10 / 5(m)-0,69	■	■	■		■	S201	Direct	1-1/2", 2"	125 / 8,6	15	71.1:S200	PRV
3-60 / 0,2-4,1	■	■	■		■	119	Direct	3/4", 1", 1-1/4"	150 / 10,3	***	51.1:119	R
3"wc-75 / 7(m)-5,2	■	■	■		■	289 Series	Direct	3/4", 1", 2"	100 / 6,9	5	71.4:289	R
15-375 / 1,03-25,9	■	■	■		■	63EG-98HM	Pilot	1" 6", 8" x 6"	450 / 30	7	71.4:63EG	R
5-375 / 0,34-25,9	■	■	■		■	98H Series	Direct	6 sizes from 1/4" to 2"	400 / 27,6	10	71.4:98	R
2-38 / 0,14-2,6	■	■	■		■	98L Series	Direct	1/4", 1/2", 3/4", 1"	125 / 8,6	10	71.4:98	R
100-1,200 / 6,9-82,7	■	■	■		■	414	Pilot	1", 2", 3", 4", 6"	1,440 / 99,2	11	71.4:414-6305	R
5-125 / 0,34-8,6	■	■	■		■	1808	Pilot	2"	150 / 10,3	***	71.4:1808	R
10-300 / 0,69-21	■	■	■		■	63EG Series	Pilot	7 sizes from 1" to 12" x 6"	360 / 25	***	71.4:63EG	R
5"wc-2 / 12(m) -0,14	■	■	■		■	66R	Direct	2", 3", 4"	8 / 0,55	***	71.1:66R	R
2"wc-7 / 5(m)-0,48	■	■	■		■	Y695	Direct	3/4", 1"	150 / 10,3	9	74.2:Y695	R
2"wc-7 / 5(m)-0,48	■	■	■		■	Y696	Direct	1-1/2", 2"	15 / 1	***	74.2:Y696	R
1/2"wc-7 / 1,2(m)-0,48	■	■	■		■	1290	Pilot	1", 2", 3", 4", 6"	75 / 5,2	9	74.2:1290	R
3-150 / 0,2-10,3	■	■			■	164	Direct	1/2"	250 / 17,2	***	71.7:164	S
5-100 / 0,3-6,9	■	■			■	167A	Direct	1/4"	250 / 17,2	4	71.7:167A	S
2-150 / 0,1-10,3	■	■			■	168	Direct	1/4"	65 / 4,5	***	71.7:168	S
10-4.7 / 0-0,32 vac	■	■	■		■	Y690VB	Direct	3/4", 1"	150 / 10,3	13	71.1:Y690	VB
1"wc-3 / 2,5(m) -0,21 vac	■	■	■		■	Y692VB	Direct	1-1/2", 2"	150 / 10,3	***	74.1:Y692	VB
0-12 / 0-0,9 vac	■	■	■		■	Y695VR	Direct	3/4", 1"	Full Vacuum	***	74.2:Y695	VR
1"wc-3 / 2,5(m)-0,21 vac	■	■	■		■	Y696VR	Direct	1-1/2", 2"	Full Vacuum	9	74.2:Y695	VR

* Pressure Ranges and Maximum Inlet Pressures are expressed in psig/bar or water column (wc) and millibar (m).

** Please request our free literature CD-ROM to view full details of products.

*** Page numbers refer to additional product information included in Industrial Regulator brochure. Not all regulators included on this chart are featured in brochure.